

MA-BA | Addressable Horns and VADs

MA-BA is a high-efficiency, addressable loop connected LED beacon used to complement audible alarms.

It is either used in noisy areas where there is a risk that an alarm will not be heard, or in public spaces which require a solution for the hearing impaired.

The device is compatible with MTech's MA analog addressable fire systems.

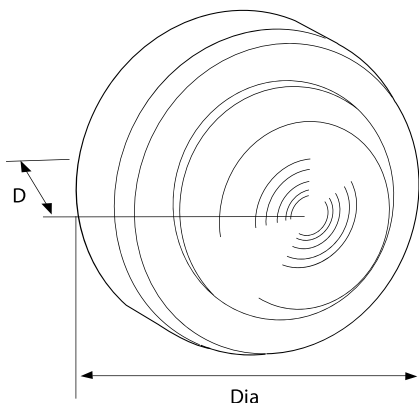


System Functionality:

- Low current consumption
- Soft addressed
- Single address
- Built-in short circuit isolators
- Loop powered
- High output LED beacon

Features & Benefits:

- Quick and simple to install
- Easy to maintain and service
- High-efficiency design
- Mounting box



Dimensions:

Dia. 95 mm | **D.** 53 mm



Order Code:

MA-BA

Technical Specifications:

Code	MA-BA
Description	Addressable LED Beacon
Standards	EN54-3, TR TC EAC 043-2017

Specification

Operating Voltage	17VDC to 32VDC
Standby Current	<250mA
Alarm Current	<4.1mA
Flash Frequency	½ Hz

Environmental

Environmental Operating Temperature	0 - 49°C
Humidity (Non-Condensing)	0 - 93% RH

Physical

Construction	PC/ABS
Color	Red
Lens Color	Red
Weight	0.15 kg
Ingress Protection	IP54

Compatibility

Suitable For Use With	MTech Analog Addressable Fire Alarm System
-----------------------	--