

MB-300 | Conventional Detectors

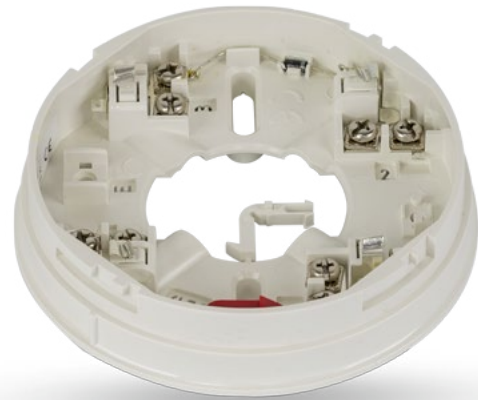
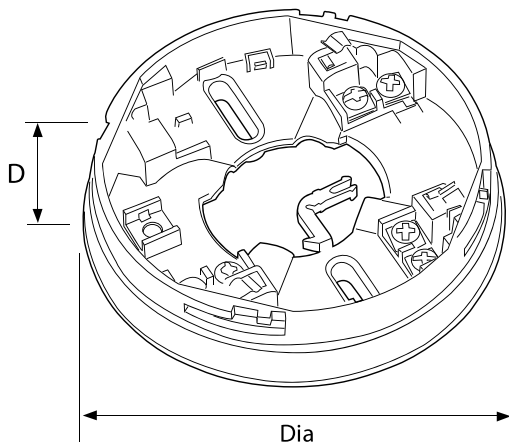
MB-300 is a standard detector base designed for conventional detectors in the MB series.

System Functionality:

- Provides fault warnings when detectors are removed
- Maintains full zone wiring integrity and fault monitoring to ensure circuit remains unbroken even in the absence of a detector

Features & Benefits:

- Quick and simple to install, includes a retaining clip for correct fitting
- Separate zone-in and zone-out terminals, each terminal can accept up to 2mm x 2.5mm cables
- Stand-off feature in base to allow proper mounting on uneven surfaces
- Optional locking devices (supplied with base) - prevent unauthorized detector removal
- Suitable for side entry surface cables



Technical Specifications:

Code	MB-300
Description	Conventional Detector Base, UQGS.S36306, UROX.S36306
Standards	UL268 6th edition, EN54-7, SII1220, TR TC EAC 043-2017

Environmental

Environmental Operating Temperature	0 - 49°C
Humidity (Non-Condensing)	0 - 93% RH

Physical

Construction	PC/ABS
Color	White
Weight	0.076 kg

Compatibility

Suitable for Use With	MTech Conventional Detectors
-----------------------	------------------------------

Dimensions:

Dia. 101 mm | D. 22 mm

Order Code:

MB-300

